

Broadband Leicestershire Stakeholder Forum

7th October 2013

Leicestershire County Council, County Hall



EUROPEAN UNION
Investing in Your Future
European Regional
Development Fund 2007-13

Programme

- **Welcome**
Andy Robinson
- **Openreach: Delivering NGA**
Joe Walsh
- **Broadband Leicestershire: update**
Matthew Kempson
- **Demand Stimulation**
Matthew Kempson
- **Delivering in the “Final 10%”**
Matthew Kempson
- **Q&A**



Welcome

Andy Robinson
Assistant Chief Executive
Leicestershire County Council



Openreach

Joe Walsh
Senior Project Manager
Openreach



Openreach: The “Big Build”

Link is for an older version of the animation

<http://www.youtube.com/watch?v=wSEuOB-gfDA>

<http://www.superfast-openreach.co.uk/the-big-build/>



Broadband Leicestershire: Update

Matthew Kempson
Broadband Project Manager
Leicestershire County Council



Programme Update

- Signed contract - 28th August 2013 at Foxton Locks
- £16.9m contract value (£4m LCC)
- 75% commercial coverage
- 93.2% NGA coverage (+52,500 prems)
- 92.3% SFBB (24Mb/s) (+50,000 prems)
- Go Live:
End Sept 2014 – end March 2016
- Good value for money (BT investment, coverage, ERDF funding)






District Totals		NGA Intervention Area		Revised ITT Response	
Leicestershire District	Total Premises	NGA White Premises	% commercial coverage	Total premises passed > 24Mbit/s	Resultant % superfast coverage of District
Blaby District	41,121	7,908	81%	6,208	95.9%
Charnwood District	73,665	12,780	83%	8,879	94.7%
Harborough District	38,587	16,844	56%	11,628	86.5%
Hinckley and Bosworth District	49,266	12,982	74%	9,121	92.2%
Melton District	23,492	10,530	55%	5,959	80.5%
North West Leicestershire District	43,112	9,823	77%	6,883	93.2%
Oadby and Wigston District	23,712	1,624	93%	1,227	98.3%
Total	292,955	72,491	75%	49,905	92.3%




Expected deployment of fibre broadband by 2018 in Leicester and Leicestershire

Purpose and notices

This map shows an overview of the expected rollout of fibre broadband to around 95% of residential and business premises in Leicestershire by the end of March 2016.


This rollout includes deployment by private companies (e.g. BT and Virgin Media) by 2016 (shaded grey ) and as a result of investment made by the County Council, Government, EU and BT through the County Council led project. This will be delivered by the end of March 2016 (shaded dark green  and light green ).

This map is high-level only. It is not accurate to premise or postcode level and should not be interpreted as such. Detailed planning is currently underway. The first Exchange areas will be announced in the New Year and an updated version of this map is expected to be published in spring 2014. This will be followed by more detailed information as each rollout phase is confirmed. Communities will be notified in advance of fibre-broadband being available in their area. This map will be reviewed on a regular basis.


Further investment is planned by the County Council, Government and District Councils for areas due to be addressed by 2018 (shaded light yellow ).

Maps, announcements and responses to frequently asked questions will be available at www.leics.gov.uk/broadband.

Existing and expected commercial coverage up to 2016

 Private Operators

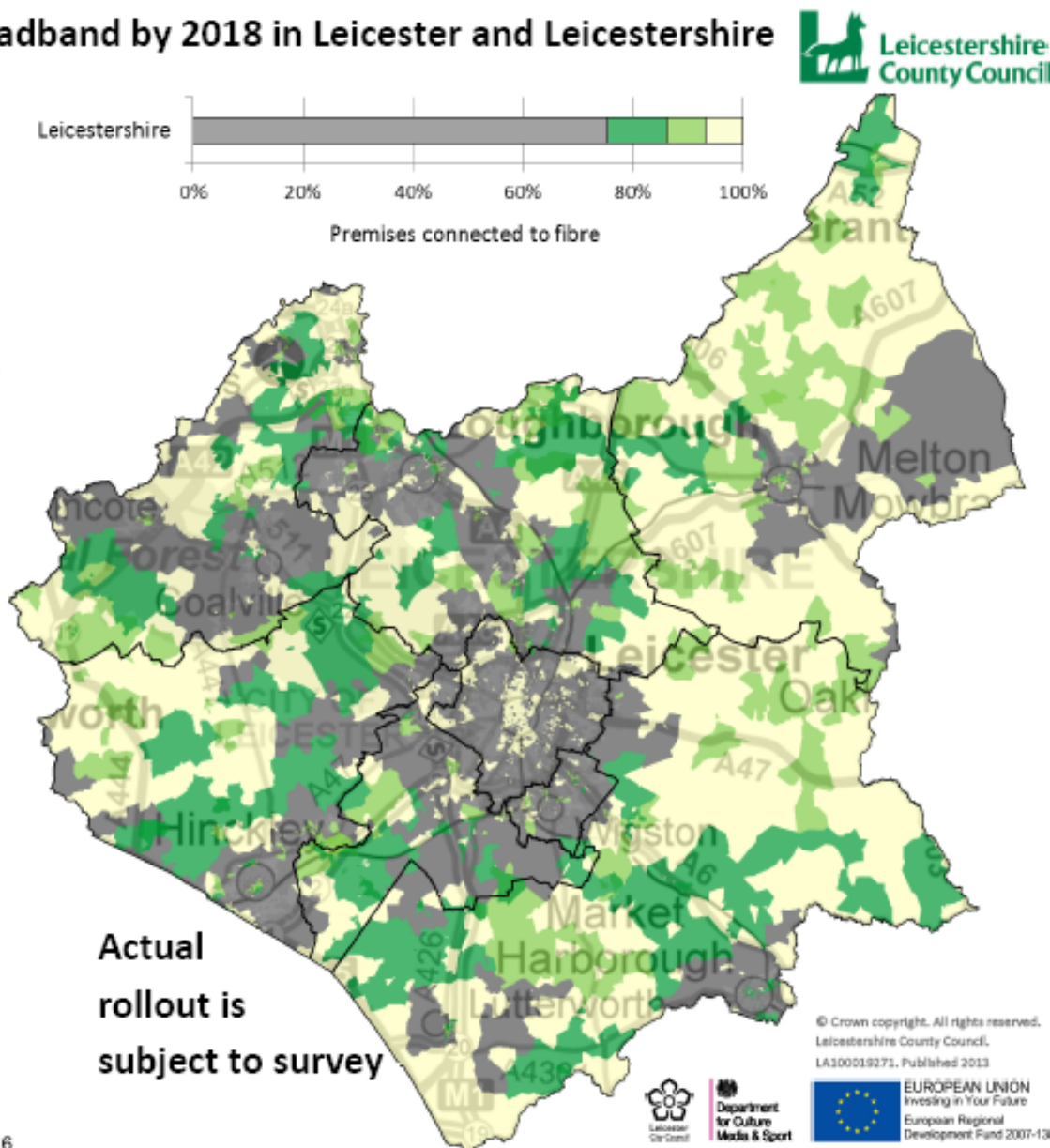
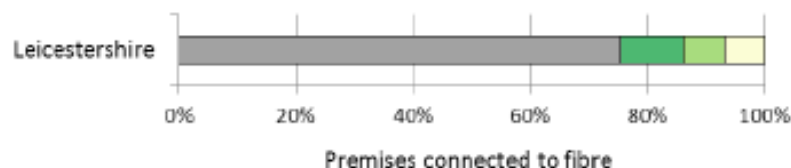
Broadband Leicestershire Contract

 Expected deployment from summer 2014

 Expected deployment from summer 2015

Further Investment - Target Completion by 2018

 With all areas receiving a minimum 2Mbit/s by summer 2016



© Crown copyright. All rights reserved.
Leicestershire County Council.
LA300019271. Published 2013



EUROPEAN UNION
Investing in Your Future
European Regional
Development Fund 2007-13

Timetable

Mobilisation

- up to end Summer 2014

Phase 1 – Dark Green

- from end September 2014

Phase 2 – Light Green

- from summer 2015

Complete deployment (inc. Infill)

- end March 2016

Demand stimulation campaign and business support in parallel with the deployment



Demand Stimulation- “Superfast Leicestershire”

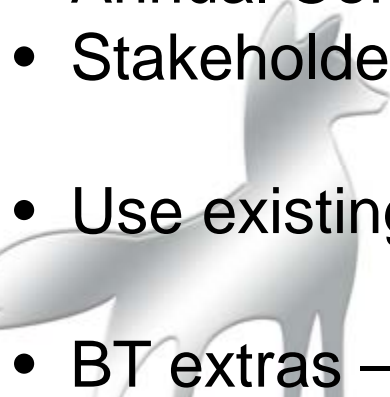


- Separate Demand Stimulation and Communications project - “Superfast Leicestershire”
- Developing Joint Strategy with BT
- Deliver alongside the deployment plan

- Aims
 - 1) Promote community and business benefits
 - 2) Encourage take-up in excess of 20%

- 4 workstreams
 - Business (working group) – EU-funded
 - Communities (working group)
 - Public sector
 - Skills
- Led by LCC Corporate Communications Team

Activities

- New website - new year (interactive maps)
 - Information leaflets
 - Public events (community and business)
 - Local newspaper and media advertising
 - Social media
 - 1-2-1 Business Support
 - Case studies
 - Digital Champions network
 - Annual Conference
 - Stakeholder engagement – e.g. MPs, parish councils, businesses
 - Use existing engagement channels – e.g. Community Forums
 - BT extras – e.g. Cabinet skins, Openreach direct leafleting
- 

Delivering in the “Final 10%



- County Council priority to push SFBB as far as possible - £300k
- Defining the “Final 10”

Current activity

- District Council investment - £1.1m – Change Control process
- Rural Community Broadband Fund (Defra)
 - Uppingham First mast scheme (east Leicestershire)
 - Disewired FTTC (Diseworth, NWL)
- Atkins technical advice (Fibre and wireless)

Future activity

- Government allocation - £250m post-2015 – Nov/Dec 2013
- Additional County Council investment
- Other funding stream and initiatives (e.g. EU)

Contact details

Joe Walsh

Joe.a.walsh@openreach.com

Matthew Kempson

Matthew.kempson@leics.gov.uk

