

Broadband Leicestershire Stakeholder Forum

24th June 2013

Leicestershire County Council, County Hall



Broadband
Leicestershire

Programme

- **Welcome**
Matthew Kempson
- **Broadband Leicestershire: update**
Matthew Kempson
- **Belvoir Networking**
David Mell
- **Q&A**
Christine Marshall, Melton Borough Council



Broadband Leicestershire: Update

Matthew Kempson
Broadband Project Manager
Leicestershire County Council



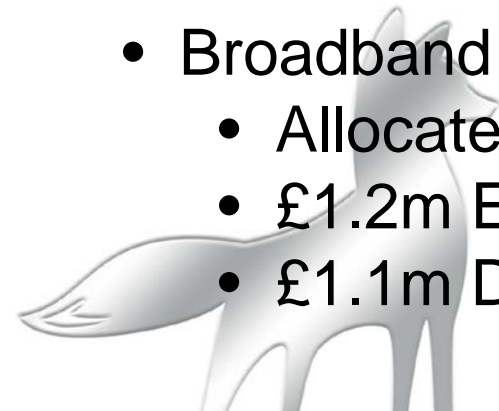
Outline

- Programme summary
- Progress
 - Timetable
 - Defining the Intervention Area
 - BT response
 - District investment
 - Demand stimulation and comms
 - Mobile phone coverage



Programme Summary

- Gov~t priority to ensure UK has the best broadband in Europe by 2015 – Aim to deliver 90:10
- County authorities leading local projects, supported by
 - Gov~t Framework contract – single supplier
 - Investment - £0.5bn
- Broadband Leicestershire established in early 2012
 - Allocated £3.31m. £4m County Council
 - £1.2m European investment – confirmed = c.£8.6m
 - £1.1m District investment – separate at this stage



Timetable

Issued final procurement documents
Clarification
Receive supplier response
Announce preferred supplier
Award contract


- 10th May 2013
- to 19th July 2013
- 19th July 2013
- 5th August 2013
- c.26th August 2013

Implementation planning
Mobilisation
1st Cabinets of Phase 1 “Go Live”
Deployment complete

- to December 2013
- to Summer 2014
- Summer 2014
- late September 2016



Defining the Intervention Area

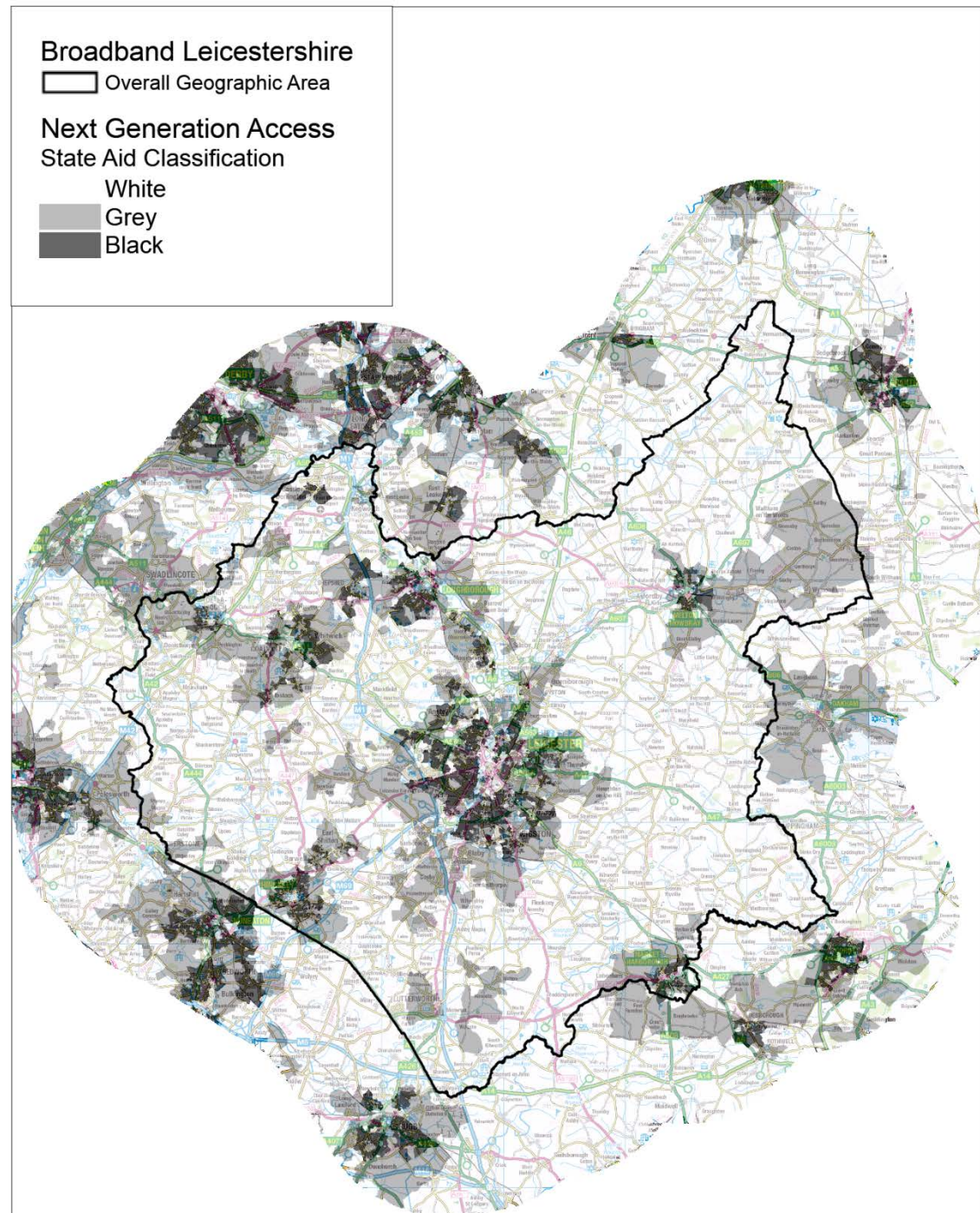
- Key State Aid required – where public investment can be made
 - Next Generation Access
 - Basic Broadband
 - Open Market Review – Openreach and Virgin Media
 - Wireless providers
 - **Belvoir Networking (I Love Broadband)**
 - **Buckminster estate**
 - AB Internet / I Need Broadband
 - Uppingham First
- 

Next Generation Access Intervention Area

- “white” areas eligible for investment to deliver NGA (FTTC, FTTP)
- 72,000 premises
- 7,100 eligible SMEs

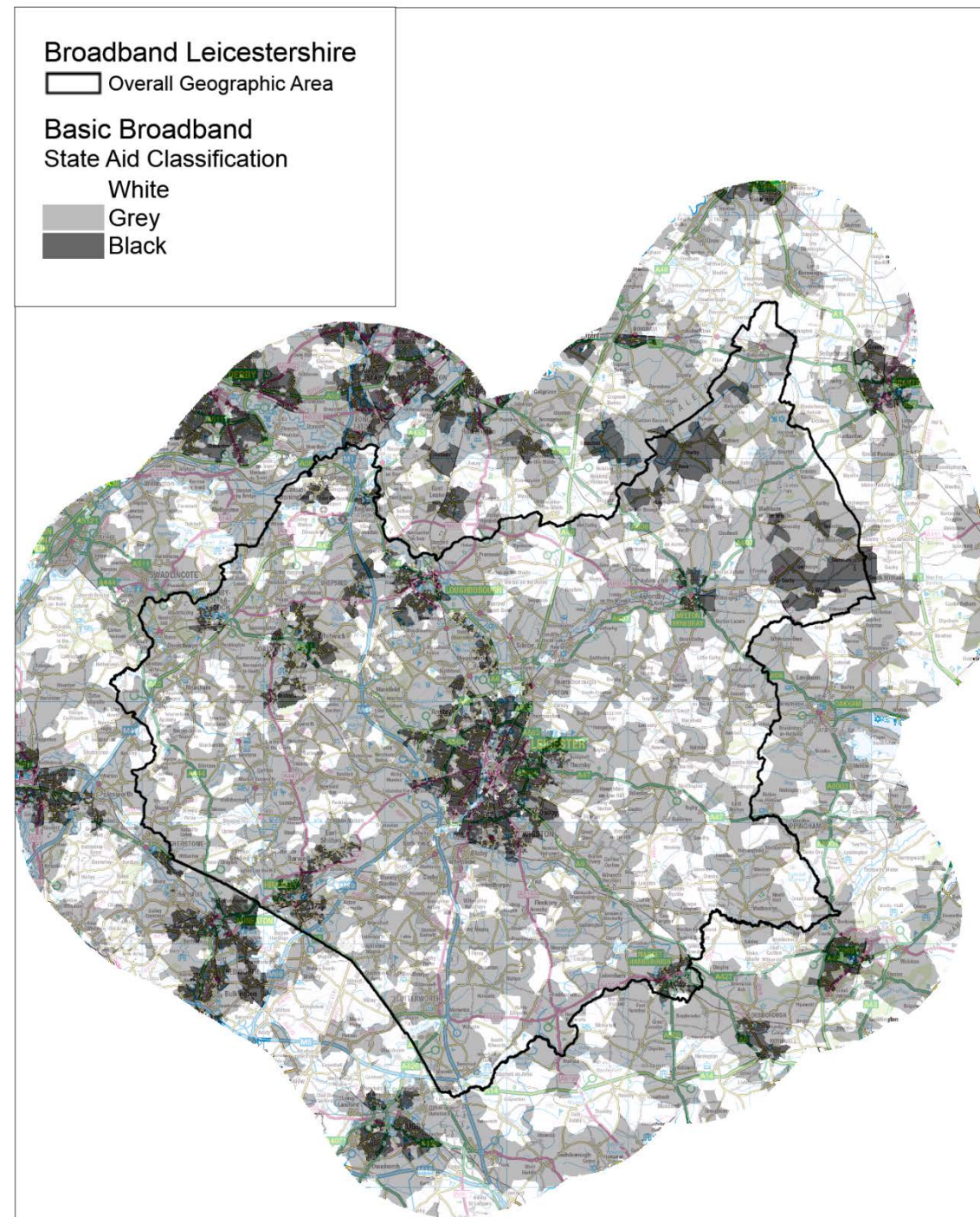
Changes made

- West Wigston exc
- Buckminster
- Leicester City (out-of-scope) (11,000 prems)



Basic Broadband Intervention Area

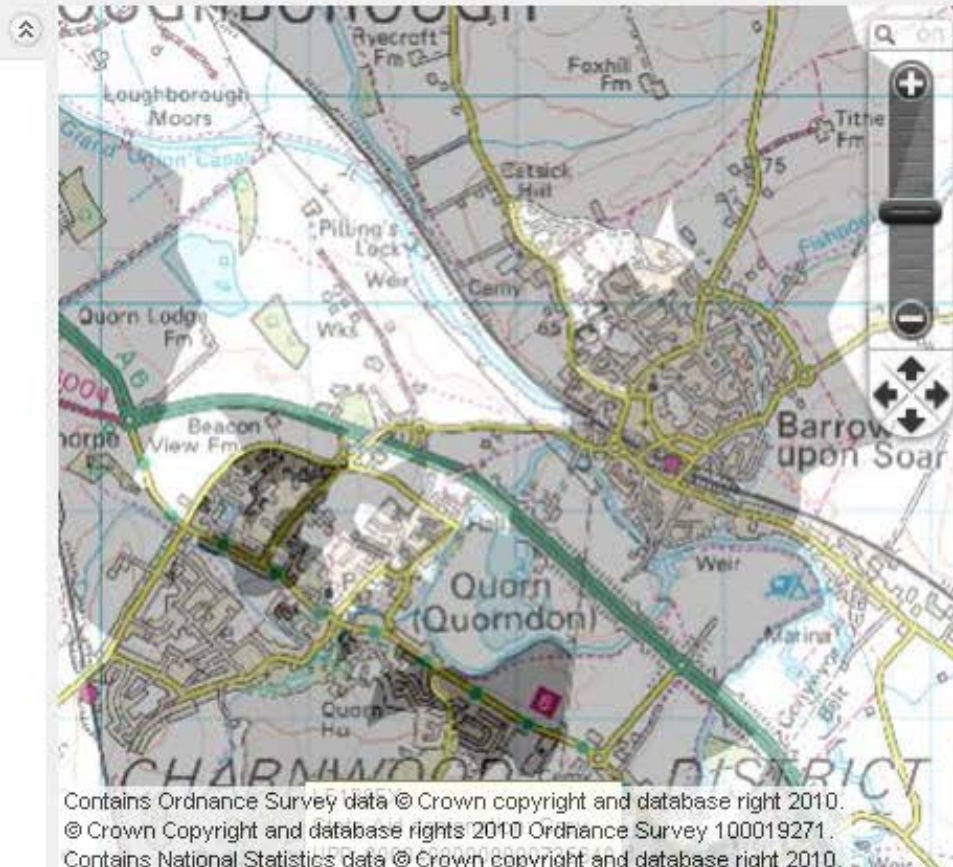
- “white” areas eligible for investment to deliver at least Basic Broadband
 - NGA
 - Infill – satellite, BET (N.B. not eligible in Grey or Black shaded areas)
- Belvoir Networking
- Buckminster





Layers

- Administrative Boundaries
 - County
 - District
- State Aid Designation (by postcode)
 - Basic Broadband
 - White
 - Grey
 - Black
 - Next Generation Access
 - White
 - Grey
 - Black



Welcome

to the Broadband Leicestershire
Web Mapping Portal

This portal has been created to help visualise the per-postcode State Aid designations for Broadband and Next Generation Access (NGA) in the Leicestershire area.

The Next Generation Access State Aid layer shows postcodes as black, grey or white based on the following definitions:

- A postcode is turned black if access line speeds in excess of 24Mbps from two or more NGA infrastructure providers are currently available or planned in the next three years;
- A postcode is turned grey if access line speeds in excess of 24Mbps from one NGA infrastructure provider is currently available or planned in the next three years;
- All other postcodes remain white.

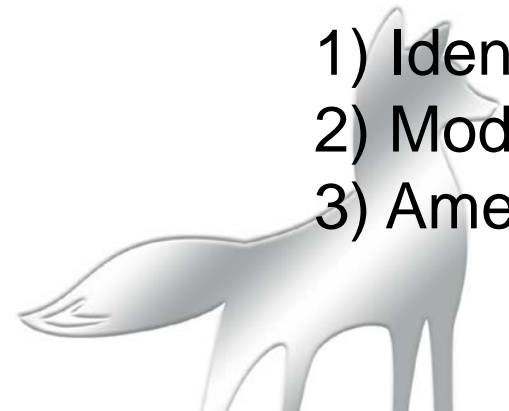
The Basic Broadband State Aid layer shows postcodes as black, grey or white based on the following definitions:

BT response

- Headline coverage and investment – 9x%, leverage
- Speed and Coverage Template – will require interpretation
 - Phasing – 6-9 phases
 - 20,000 postcodes to 3000 census areas (LSOA)
 - Access Line Speed range – optimum
 - Busy Hour Committed Rate range - peak
- Governance and administration – joint project management
- Timetable
- “Subject to survey” and assumptions
- Commercial in confidence
- Share information in December 2013

District Council investment

- Extent of deployment differs across Leicestershire – reflected in investment committed
- Originally sought to incorporate District investment
 - BT modelling limitations / resurvey requirements
- Staged process
 - 1) Identify impact of core investment. Discuss with Districts
 - 2) Model impact of additional investment with supplier
 - 3) Amend contract – within 3 months



Demand stimulation and comms

- Keeping informed and increasing demand – 20% take-up
- European investment - £150,000 – target businesses
- Develop a programme of activity around this
- Allocate further investment as required
- Timing is critical



Mobile Infrastructure Project

- 4 Gov~t led broadband/mobile programmes
 - Including 4G auction, Urban, Rural and MIP
- £150m to improve mobile coverage – new masts
- 3 “not-spot” clusters in Leicestershire – v. small areas
 - Belvoir Village (Melton Borough)
 - Owston (Harborough District)
 - Hallaton (Harborough District)
- Liaising with the contracted supplier - Arqiva



Contact details

Matthew Kempson

matthew.kempson@leics.gov.uk

Helen Harris

helen.harris@leics.gov.uk

David Mell

david@belvoirnetworking.com



Belvoir Networking: Stathern

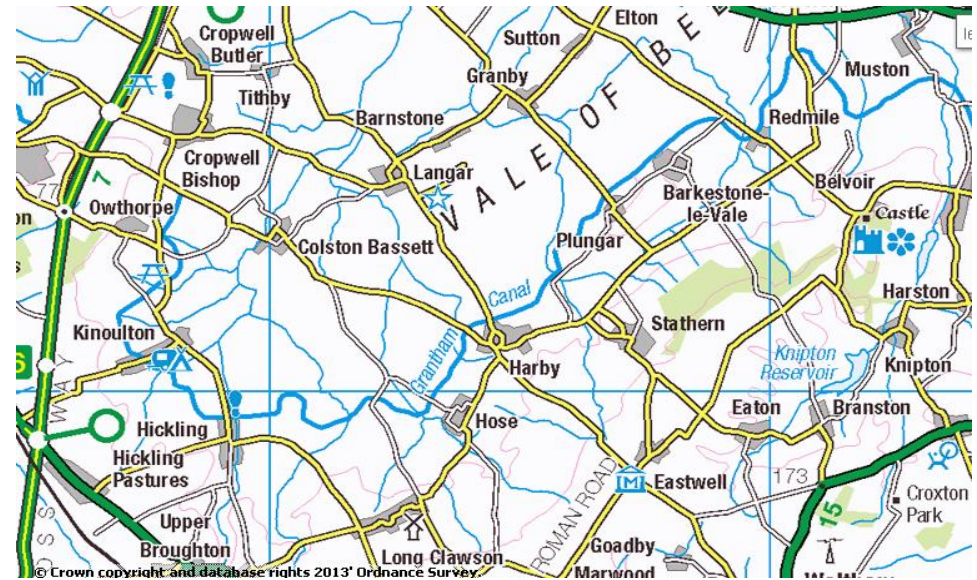
David Mell
Director, Belvoir Networking CIC



Vale of Belvoir experience

- Where and Who we are
- Our story
- Our solution
- Lessons Learned
- Our Advice
- Questions

The Vale of Belvoir



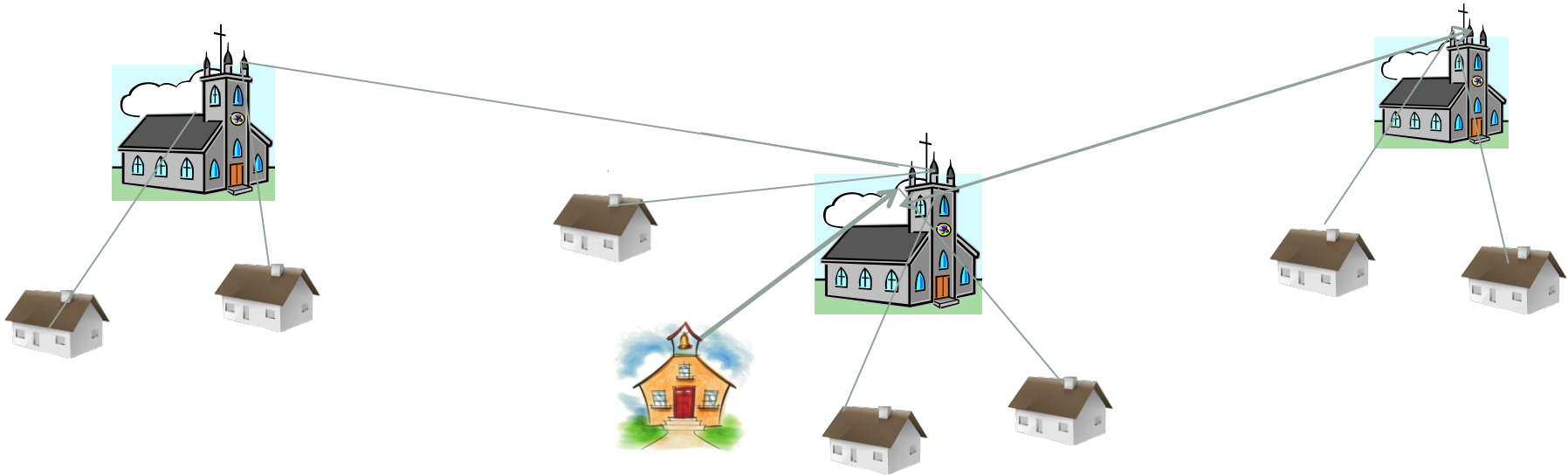
A Nexus of smallish villages

- 3 or 4 miles apart
- Most with own Church – towers rather than spires
- Mixed populations
 - A few more sizable SMEs – highish tech
 - Many sole traders
 - Commuters into Leicester and Nottingham
 - Wide age range
- “Market 1” exchanges (BT only) and Broadband <2mbs

Our Journey

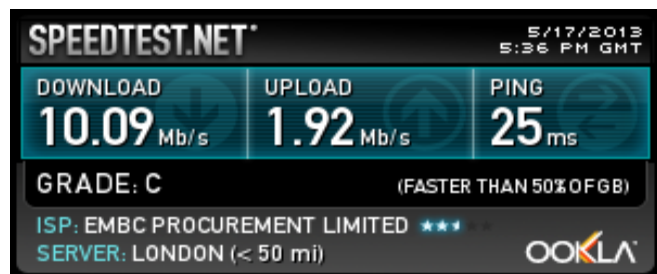
- Agitation at Belvoir Forum: [2008-2009](#)
- East Midlands Development Agency Bids: [2010-2011](#)
 - Formed Belvoir Networking CIC
 - Innovative Financially Engineered Bid using Rutland Telecom
 - Process stopped because of State Aid Issues
- Looked at Alternatives: [2011-2012](#)
 - Wireless solutions with no State Aid.
 - Settled on LN Communications
- Planning Permission, Church Faculty and Contract: [2012/13](#)

How it works



- Stathern School has 100mbs Fibre Connection
- 2012/13 cost hits new school budget = half a teacher
- Stathern Church is Grade II* Listed
- LN Communications Contracts with EMBC and Church
 - Dramatic reduction in cost to school – restores solvency
 - Income to Church (£500pa plus cost of electricity)
- Technology is Industrial Strength WiFi- well proven
 - Other Diocese have used this model – Norwich WiSpire

Current Status



- Packages available
 - £14.99 – 10mbs down, 2mbs up
 - £19.99 – 20mbs down, 5mbs up

- Test install early May – Red Lion pub & Restaurant
- Roll out started end May
- Now c.25 installed in and around Stathern – Line of Sight to Church
- Next steps
 - Install distribution point Long Clawson
 - Voice over IP offering (VOIP)

Lessons Learned

- Wireless is a good solution
- Providers are a plethora of small local companies
- Community Projects are hard work – and very slow
- Dealing with “Institutions” is hard work – and very slow
- We are happy to share templates and precedents
 - Planning Permission
 - Church Faculty
 - Contract acceptable to Church Legal Dept
- Fast Broadband makes a real difference **BUT.....**

Considered Advice

- Only try this at home if
- You are likely to be in the 2mb solution area from BDUK project
- Or in Fibre to the Cabinet area but many premises > 1.5km from cabinet
- And your school (or other building) has an underused fibre connection
- And you have lots of energy, persistence and time....

Questions?

david@belvoirnetworking.com