

Broadband Leicestershire

Stakeholder Briefing

22nd April 2013

Leicestershire County Council, County Hall



Broadband
Leicestershire

Programme

- **Welcome**
Andy Robinson
- **Openreach: Delivering SFBB**
Matt Freeman
- **Broadband Leicestershire: update**
Matthew Kempson
- **Mobile Infrastructure Project**
Matthew Kempson
- **Q&A**
Andy Robinson



Welcome

Andy Robinson
Assistant Chief Executive
Leicestershire County Council





BT: bringing fibre broadband to rural communities

Matt Freeman
NGA Commercial Partners Team, Openreach

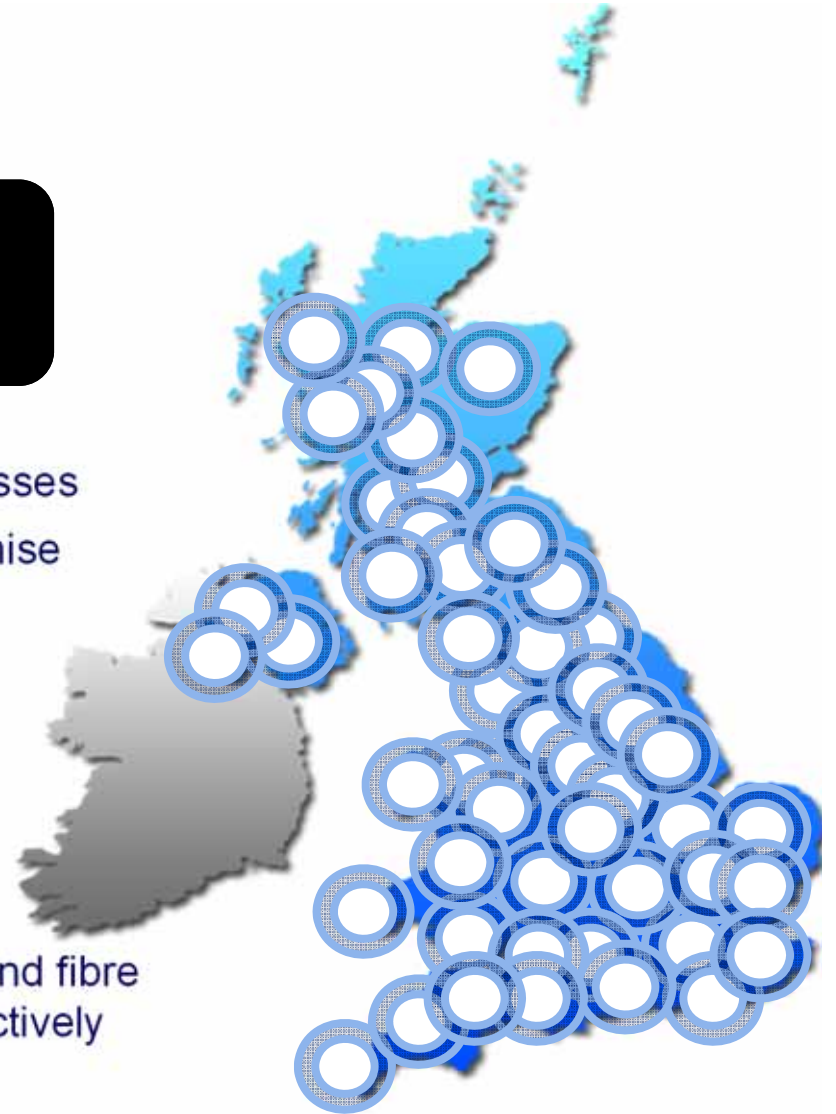


BT's fibre broadband roll-out



£2.5bn investment to bring “superfast” fibre broadband to around two-thirds of UK premises during Spring 2014

- ▶ Already available to more than 13 million homes and businesses
- ▶ A mixture of fibre to the cabinet (FTTC) and fibre to the premise technology (FTTP)
- ▶ FTTC delivers wholesale speeds up to 80Mbps download and 20Mbps upload
- ▶ FTTP delivers wholesale speeds up to 330Mbps download and 30Mbps upload
- ▶ This Spring: FTTP to become available “on demand”
- ▶ Through public-private partnerships, we believe we can extend fibre broadband to more than 90% of UK premises – and we’re actively bidding for funds now across the UK



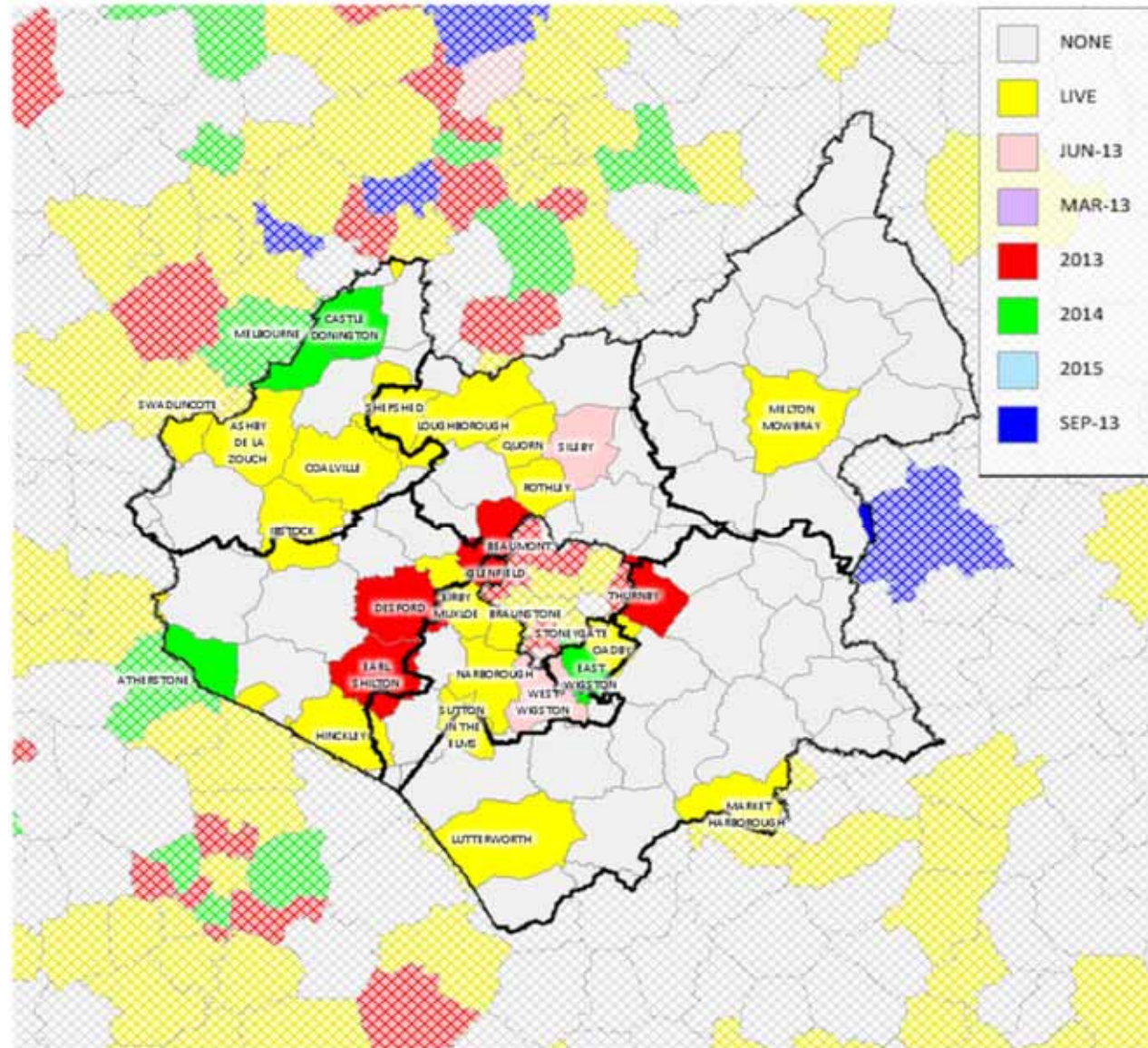
Leicestershire Exchange Areas by NGA Rollout Phase

- 2013
- Beaumont
- Desford
- Earl Shilton
- Glenfield
- Thurnby

- 2014
- Atherstone
- Castle Donington
- East Wigston
- Melbourne

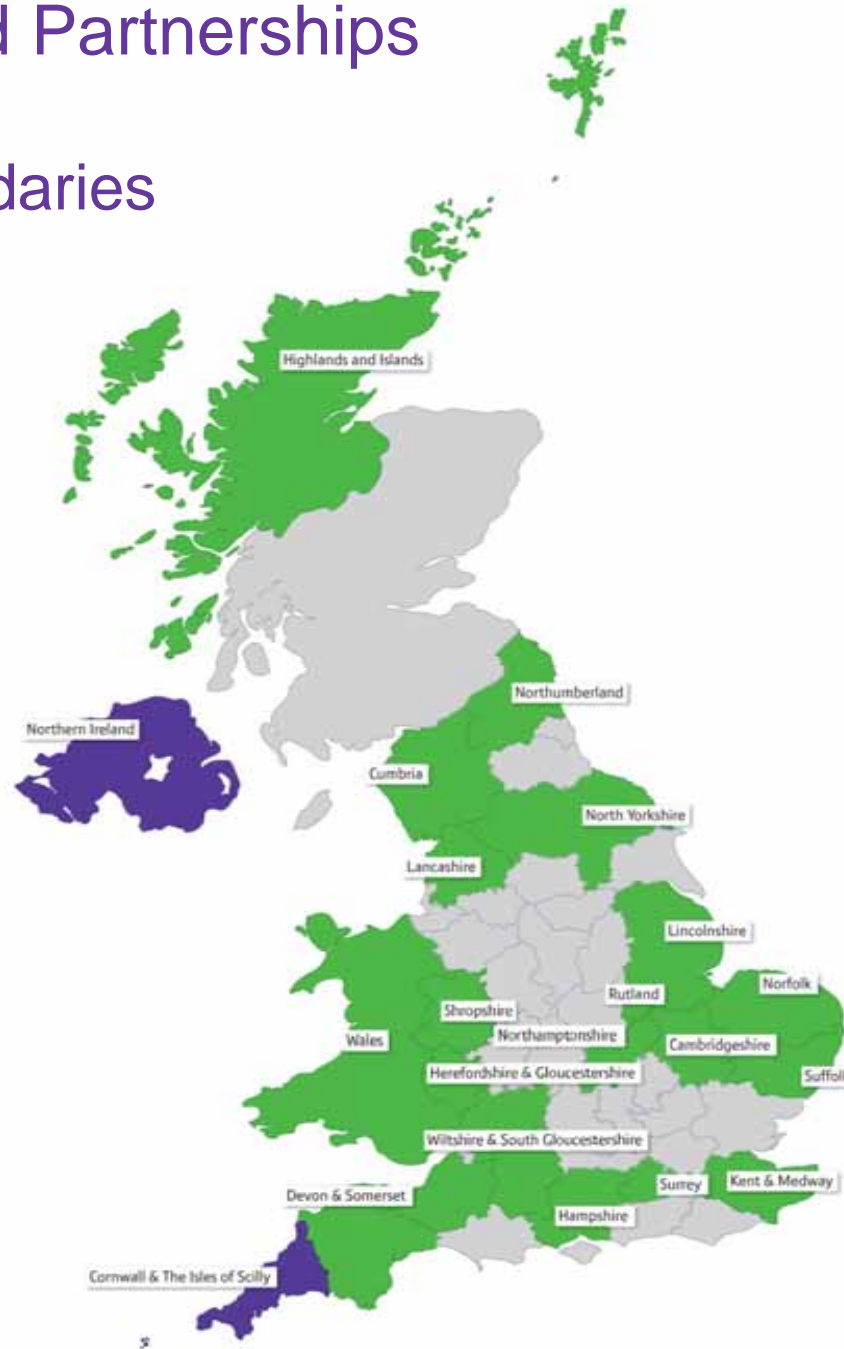
- JUN-13
- Sileby
- West Wigston

- LIVE
- Ashby De La Zouch
- Braunstone
- Coalville
- Hinckley
- Ibstock
- Kirby Muxloe
- Loughborough
- Lutterworth
- Melton Mowbray
- Market Harborough
- Narborough
- Oadby
- Quorn
- Rothley
- Shepshed
- Stoneygate
- Sutton In The Elms
- Swadlincote

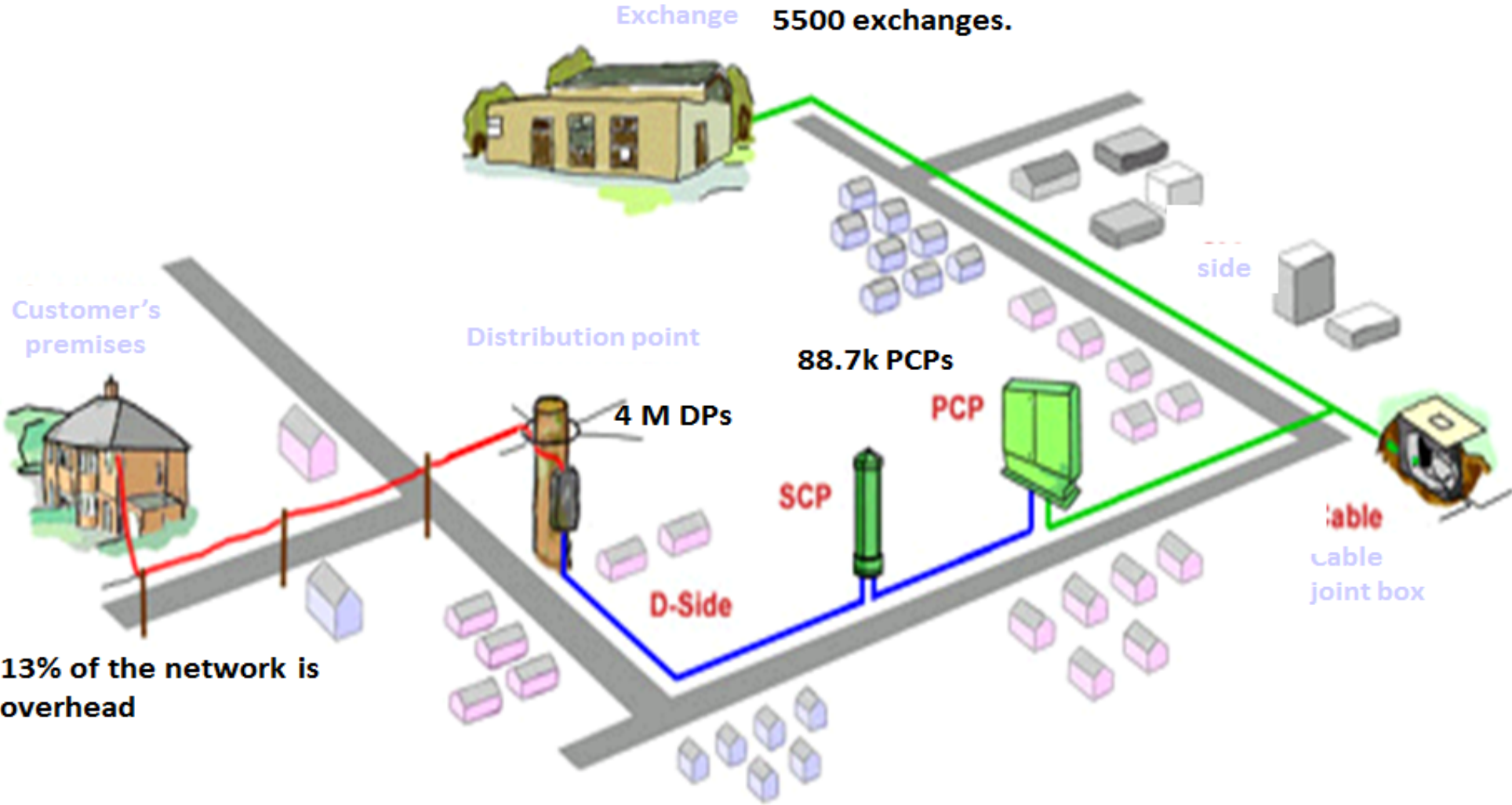


Fibre Broadband Partnerships

Going beyond the commercial boundaries



Openreach – Access Network Provider



An open network accessible to any Communications Provider.

Open Access – Ensures National RSPs invest in significant retail level marketing and advertising for 2/3rds that flows through into final third



'Speak up now for super-fast broadband'
SUFFOLK: **BT** conducting nationwide survey
By Katie McKeown and Andy Robinson
Last night Nicola Fratta, regional director of the Country, Local and Business Association said the organisation had announced the results of its annual survey on broadband speeds.
"It is no secret that we are looking for more speed and better service from our providers," said Fratta.
"We have seen a lot of progress in the last few years and we are excited to see the results of this survey."



eclipse Superfast business fibre broadband faster with guaranteed throughput

0800 915 5281 | Chat online now | Request a Consultation

Can you get Fibre? Find out with our interactive availability map. [Check now](#)

Superfast business fibre broadband
Eclipse are proud to be one of a few providers able to offer new superfast fibre broadband technology right from the start of the roll out programme.
Offering faster speeds and, crucially, a guaranteed throughput, superfast fibre broadband provides a consistently better performance than ADSL...
Get the best for your business with next-generation broadband.



Superfast broadband is truly transformational technology, which opens up new possibilities as to how people use and interact with the internet



Fibre Optic Broadband
Our Fibre Optic Broadband Boost gives you high performance broadband day or night

TalkTalk

Switch to Zen Broadband for FREE...
...and enjoy our increased broadband download usage allowances

fully resilient 10Gbps core UK network with points of presence in

More solutions for the slowest spots

BT is trialling solutions to improve broadband speed for the most remote rural premises



LTE/4G trials in Cornwall

200 customers received average speeds of 7Mbps download and 2Mbps upload



Satellite trials in Cornwall



Why BT?

- ▶ The job is demanding. Building a robust, future-proofed infrastructure is physically and technically challenging. BT has the skills and the experience to do the job.
- ▶ Once built, networks must also be maintained and developed for the long term. BT offers certainty of supply.
- ▶ BT has locally-based expert engineering resources and back-up services to ensure that as many people as possible can reliably enjoy world class broadband services.
- ▶ Unlike others, we're willing to accept long pay-back terms on our broadband investments
- ▶ Our network is future-proof. We're trialling 10Gbps speeds



Broadband Leicestershire: Update

Matthew Kempson
Broadband Project Manager
Leicestershire County Council



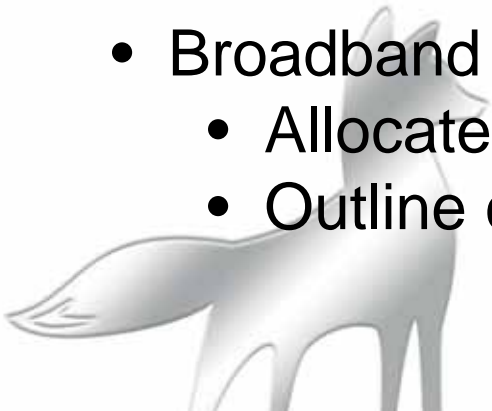
Outline

- Programme summary
- Progress
 - Defining the Intervention Area
 - Supplier Engagement
 - Speed vs Coverage
 - Timetable
 - Rural Community Broadband Fund



Programme Summary

- Gov~t priority to ensure UK has the best broadband in Europe by 2015 – Aim to deliver 90:10
- County authorities leading local projects, supported by
 - Gov~t Framework contract
 - Investment - £0.5bn
- Broadband Leicestershire established in early 2012
 - Allocated £3.31m. Local investment required.
 - Outline commitment for £1.2m European investment



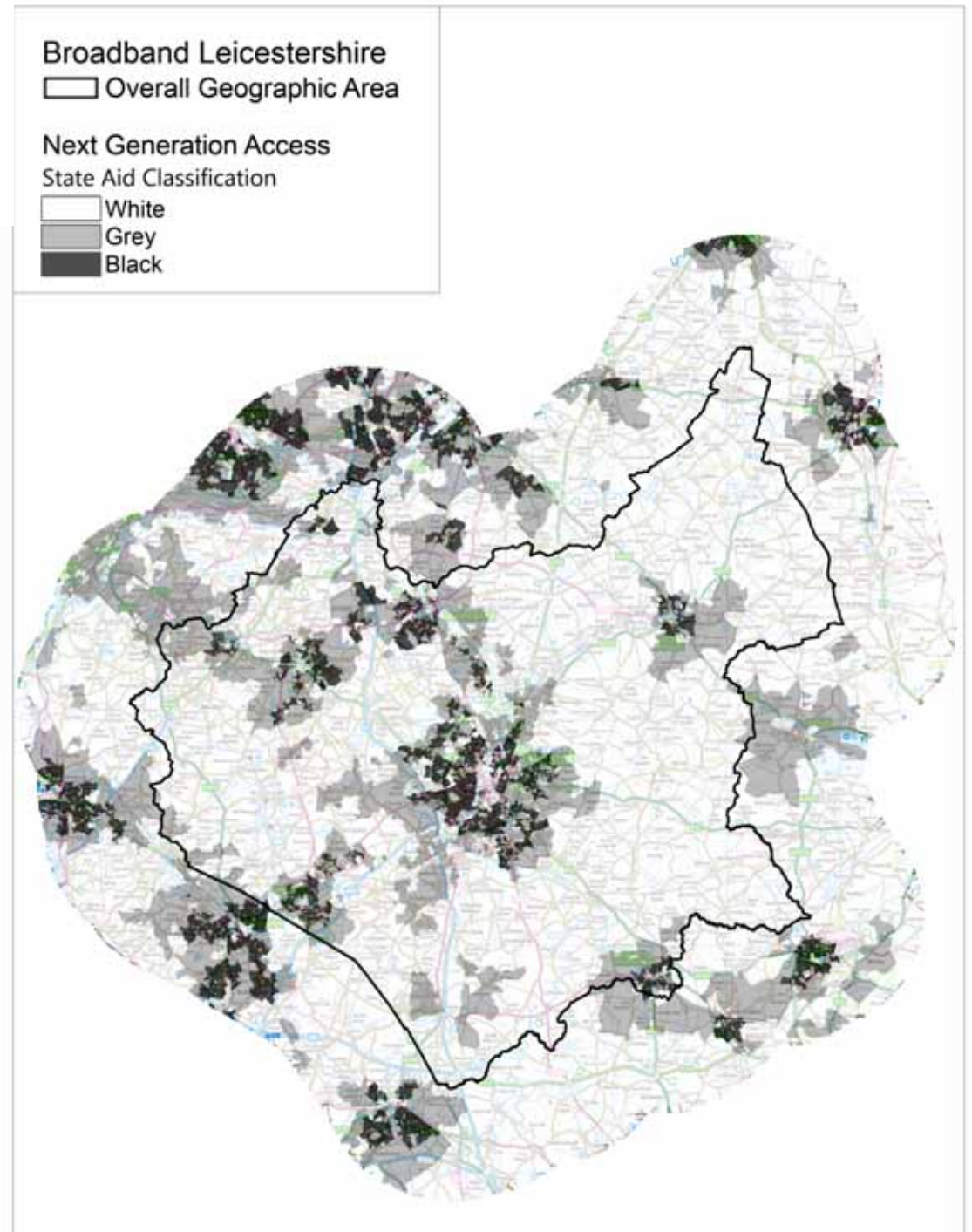
Defining the Intervention Area

- Key State Aid required – where public investment can be made
- Open Market Review – Openreach and Virgin Media
- Draft IA for SFBB/NGA and Basic Broadband
- Calendar month consultation
 - Online consultation document – interactive map
 - Responses from Openreach and wireless operators



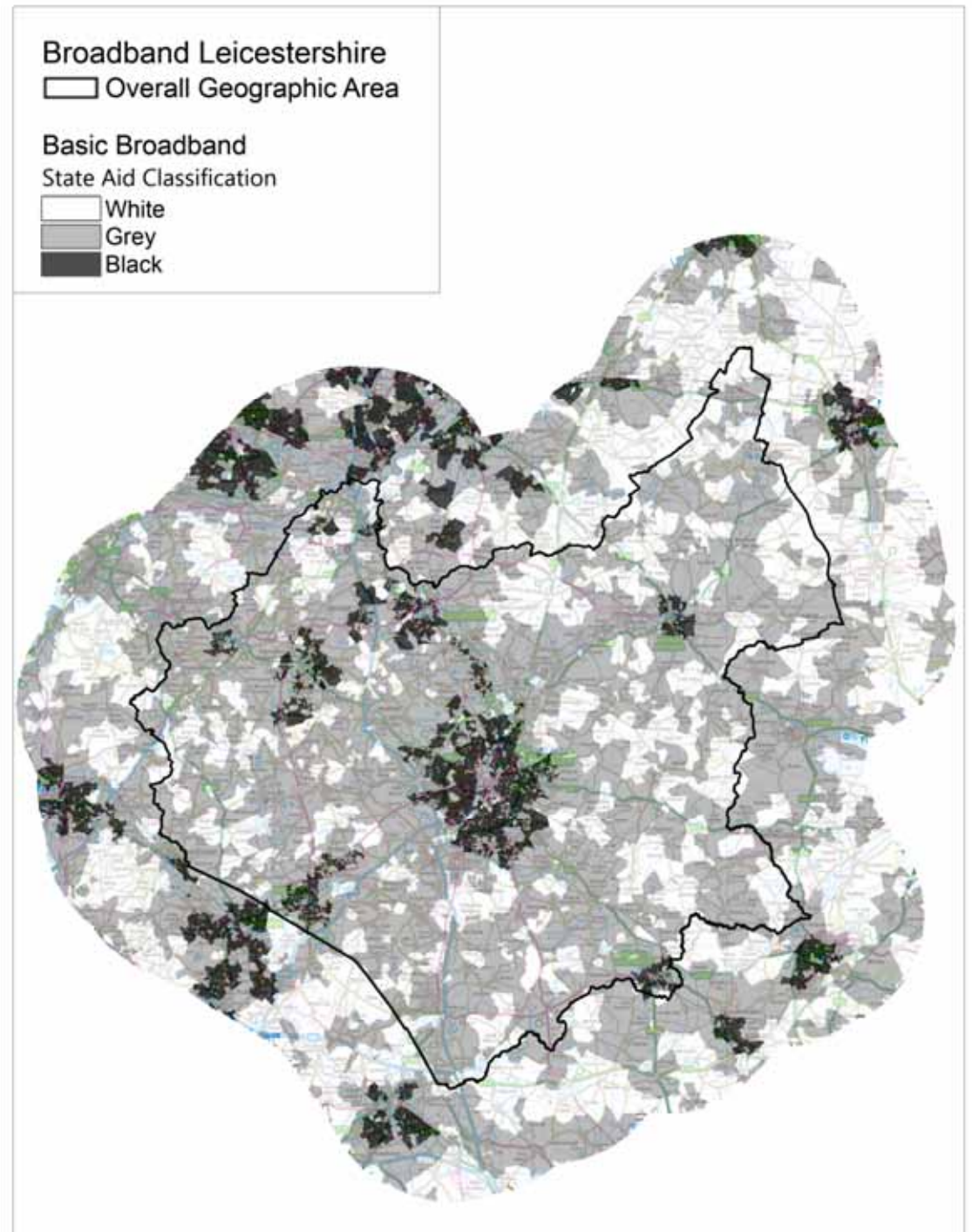
Super-Fast Broadband Intervention Area (draft)

- A postcode is turned **black** if access line speeds in excess of 24Mbps from two or more NGA infrastructure providers are currently available or planned in the next three years;
- A postcode is turned **grey** if access line speeds in excess of 24Mbps from one NGA infrastructure provider is currently available or planned in the next three years;
- All other postcodes remain **white**.



Basic Broadband Intervention Area (draft)

- A postcode is turned **black** if Basic Broadband services at a minimum access line speed of 2Mbps are currently available or planned in the next three years from two or more providers
- A postcode is turned **grey** if Basic Broadband services at a minimum access line speed of 2Mbps are currently available or planned in the next three years from one provider;
- All other postcodes remain **white**.



| District | Premises outside SFBB commercial deployment | % of all premises in District |
|---------------------------|---|-------------------------------|
| Blaby | 13,500" | 33* |
| Charnwood | 12,780 | 17 |
| Hinckley and Bosworth | 12,982 | 26 |
| Harborough | 16,849 | 44 |
| Melton | 11,282 | 48 |
| North West Leicestershire | 9,823 | 23 |
| Oadby and Wigston | 2,242 | 9 |
| Leicestershire | 79,458 | 27 |
| Leicester City | 11,099 | 8 |



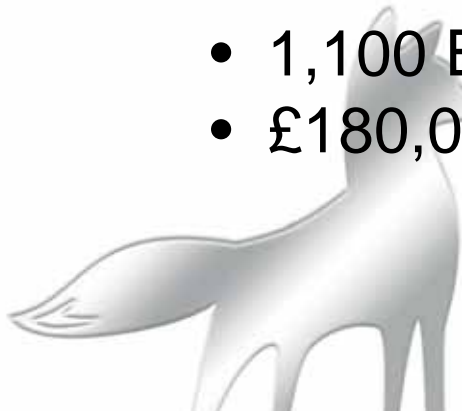
Supplier Engagement

- 4 sessions held – BT and Fujitsu invited
- Areas covered
 - Outline of local priorities and issues
 - Legal and finance
 - Demand stimulation
 - Mobilisation and deployment
 - Draft tendering documents



Key issues discussed

- **District investment**
 - Districts each allocated ring-fenced investment (£0-£0.5m)
 - How to ensure visibility – impact of investment
 - Initially exclude District Council investment
- **City Council area**
 - 92% commercial deployment in the City
 - 1,100 Basic Broadband premises in-scope
 - £180,000



- **Speed vs Coverage**

- Residents do not necessarily want speeds of >24Mbit/s
- How to ensure the best broadband speeds in Leicestershire
- Technical solution offered – FTTP, FTTC, BET and satellite

- 85% of all in-scope SFBB white premises (i.e. of 80k) would achieve super-fast broadband speeds from an upgrade of all serving cabinets
- 94% premises within 3km – achieve min 2Mbit/s

- Recommendation to weight deployment to speeds 24-30Mbit/s
 - FTTC – sustainable technology solution
 - Increases speeds into the Final 10%



Timetable

| | |
|---------------------------------------|--------------------------------|
| Issue final procurement documents | w/c 6 th May 2013 |
| Supplier engagement and clarification | to 22 nd July 2013 |
| Receive supplier responses | 22 nd July 2013 |
| Award contract | c.26 th August 2013 |

| | |
|---------------------|---------------------|
| Mobilisation | to Summer 2014 |
| Commence deployment | Summer 2014 |
| Deployment complete | late September 2016 |



Defra Rural Community Broadband Fund



- Final 10% remote rural areas – £20m.
- Round 3 – EOI deadline, 24th May
- Disewired – fibre scheme
- BT involvement – commercial challenge
- Successes - Rothbury (BT), Tove Valley (wireless)

- 4 different models – Build and Benefit – DIY

- No further funding announced but understand Gov~t is considering how best to support deployment in remote rural areas
- LCC - £300k
- <http://rdpenetwork.defra.gov.uk/funding-sources>
- Let us know if you are considering applying

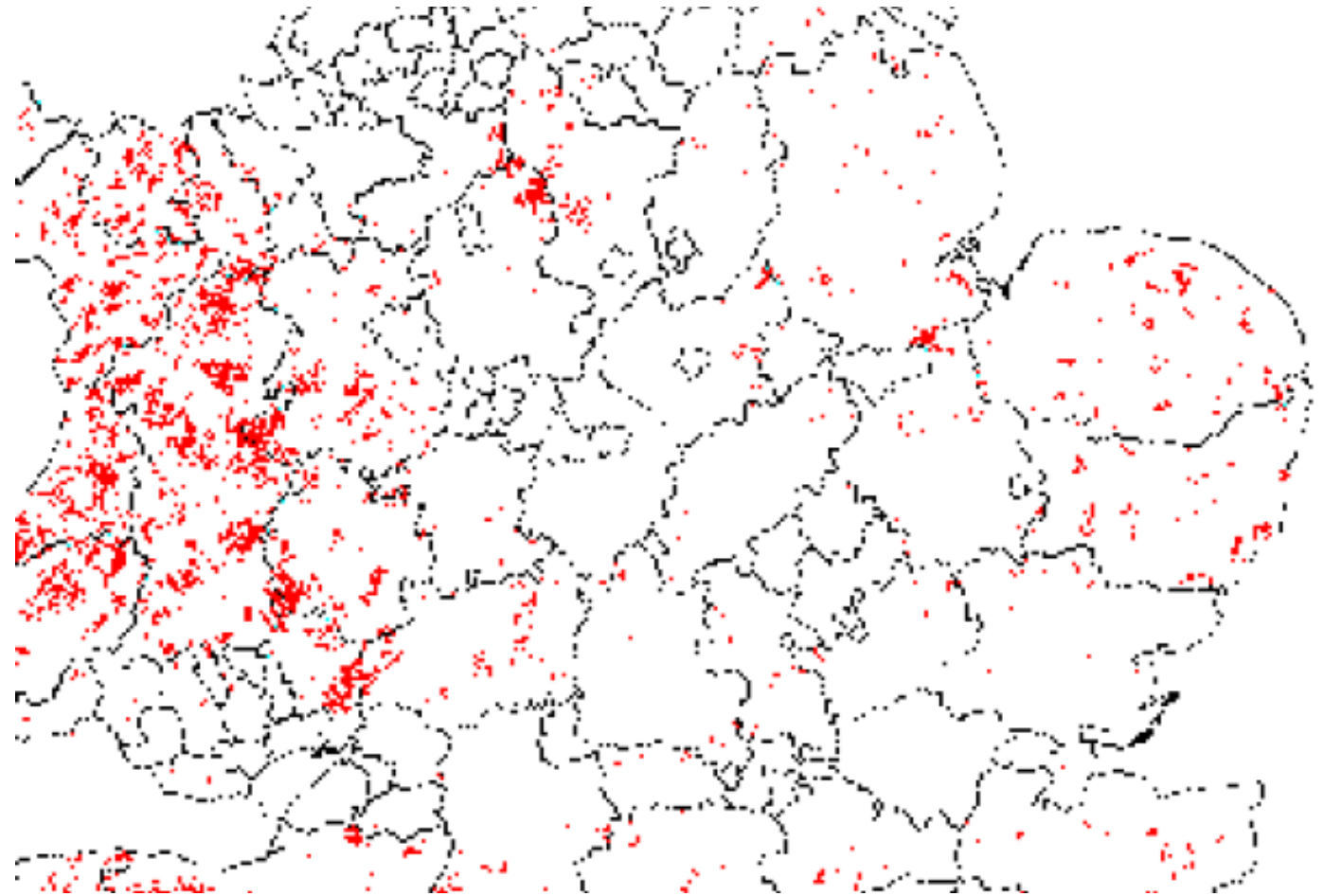
Mobile Infrastructure Project



- 4 Gov~t led broadband/mobile programmes
 - Including 4G auction, Urban, Rural and MIP
- £150m to improve mobile coverage – new masts
 - No and low quality coverage
 - 2G (<0.1%) and 3G (0.4%) - England
 - 80,500 premises in the UK – not-spots
- Deployment: early 2013-2015
- Need to fully understand implications for Leicestershire



Mobile Not-Spots



Contact details

Matt Freeman

Matt.freeman@openreach.com

Matthew Kempson

Matthew.kempson@leics.gov.uk

Mike Doyle

info@disewired.com

