

Superfast Leicestershire Stakeholder Forum

23rd February 2014

Welcome



**SUPERFAST
BRITAIN**



EUROPEAN UNION
Investing in Your Future
European Regional
Development Fund 2007-13

Agenda

- Welcome – Mrs Posnett
- Superfast Leicestershire Update – Matthew Kempson
- Demand stimulation – Matthew Kempson
- Digital Champions – Debbie Read
- Community solutions – Helen Harris
- Q&A – Tom Purnell

Welcome

Mrs. Pam Posnett CC

Cabinet Lead for Rural Broadband
County Councillor, Melton North
Division



Superfast Leicestershire Update

Matthew Kempson

Broadband Project Manager



**SUPERFAST
BRITAIN**



EUROPEAN UNION
Investing in Your Future
European Regional
Development Fund 2007-13

Superfast Leicestershire

- Leicestershire County Council's vision – All premises can access superfast speeds (>24Mbps) by 2018
- Range of solutions
 - 1) Commercial deployment
 - 2) Existing BT contract
 - 3) Superfast Extension Programme
 - 4) Community-led solutions

Existing BT contract

- £18.8m contract signed end August 2013
- Investment from government, LCC, BT, Europe and districts.
- Increase fibre broadband coverage from 75% premises to 96%
- 62,000 premises – c.300 cabinets
- Deployment from July 2014-end March 2016
- 114 cabinet live - 24,000 premises (94% SFBB speeds - >24Mbps)
- Pipeline: 70 additional cabinets stood – 16,000 premises
- Universal Service Commitment – 2Mbps

Get faster broadband Superfast Leicestershire








Map of expected fibre broadband coverage
in Leicestershire (October 2014)

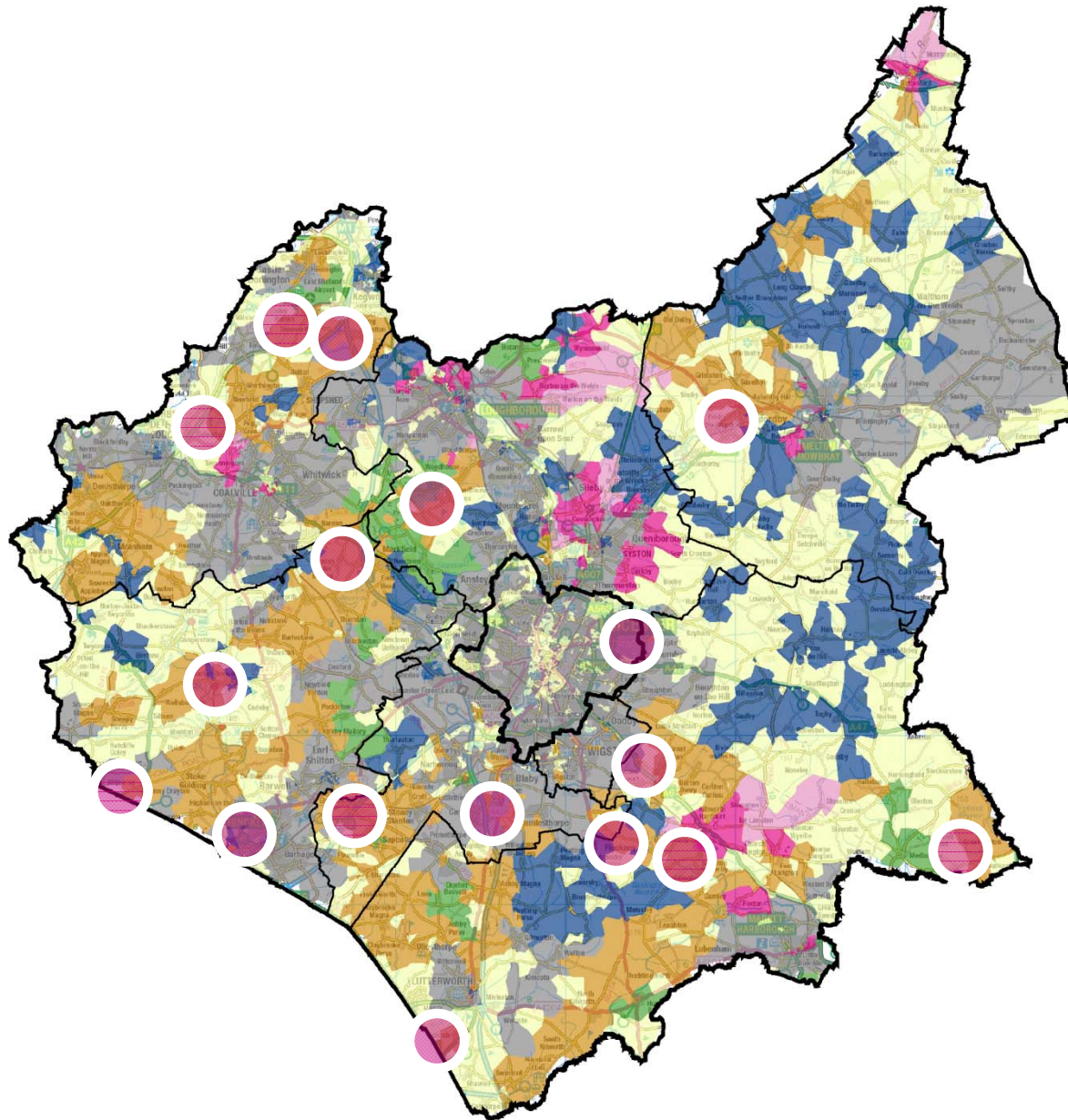
Commercial in Confidence

Legend

-  Leicestershire Boundary
-  District/Authority Boundaries

MAR - Oct14 Interactive Map Classification

-  Commercial Coverage
-  Superfast fibre broadband now available in parts of this area. Use our Line Checker for more information
-  Superfast fibre broadband now available in parts of this area but some premises may not receive superfast speeds
-  Planning and survey work underway or happening soon. Superfast broadband expected in parts of this area from 2014
-  Superfast broadband expected to become available in parts of this area by summer 2015
-  Superfast broadband expected to become available in parts of this area by spring 2016
-  Superfast Broadband plans in this area are not yet confirmed. Leicestershire County Council is seeking to secure solutions between now and the end of 2018



Superfast Extension Programme

- Used Government Framework contract – BT, Not Fujitsu
- £6.9m additional public investment (£1.45m LCC)
- Additional potential funding – districts and parishes (up to £3.5m); additional £2.2m for Leicester City
- Conducted Open Market Review – baseline deployment
 - 26,000 eligible premises
- Tender – Maximum VfM; prioritise “No Build” areas
- Received bid submission from BT - evaluation
- Expect to award contract in late March (prior to pre-election period) subject to detailed evaluation and contact finalisation. Update Expected Coverage map in early summer
- Impact on community-led solutions and Universal Service Commitment (2Mbps)



Open Market Review (Commercial)

- BT
 - Concluding £2.5m commercial rollout (inc. SL project)
- Gigaclear
 - Welland Valley – targeting c.750 premises
 - 40% take up – currently at 75%
 - Expect to build from late March / early April
- Warwicknet
 - Business parks (with a residential offer) – seek demand
 - Upgrade Openreach cabinets – 44 cabinets
 - Bardon, Dodwells and Thumaston
- Virgin Media
 - £3bn investment – announcement after OMR
- Buckminster estate

Universal Service Commitment

- Current BT contract
 - High-speed fibre broadband – 96%
 - 100% Universal Service Commitment – 2Mbps “Infill”
- 2 technology solutions – **Satellite** and BET
- Contracted to be delivered end March 2016
- No planning has been initiated for this solution
- Subsidised offer through existing satellite providers
- Marketing plan to be determined – targeted or open
- Review USC deployment based on Superfast Extension Programme – impact on contracted infill
- Key priority – ensure VfM for the contract
- BDUK national project – end December 2015 – voucher scheme (tbc)

Demand stimulation campaign

- Maximise benefits of superfast broadband
 - 1) Realise community and business benefits
 - 2) Gainshare mechanism (>20% take-up across Leics.)
- Planned activity
 - www.superfastleicestershire.org.uk – regular updates
 - Cabinet stickers
 - Piloting community marketing (lamp-post signs, beer mats, community events)
 - Direct to parish councils and local articles
 - Digital Champions network
 - Themed campaigns – social media
- Dedicated business project (ERDF) - workshops

Digital Champions

Debbie Read

Community Broadband Co-ordinator



The Digital Champion Role

- Make Leics communities aware of the benefits of being online
- Help communities to learn new skills
- Ensure that communities can reap the benefits of superfast broadband in Leics
- Share passion and knowledge of the digital world with others
- No need for digital experts, just a level of knowledge and enthusiasm to communicate it to others

What Digital Champions might do

- Run an IT taster session for community groups
- Lead a drop-in session locally where people can ask for help, or try out using a laptop or tablet
- One to one coaching
- Put up posters or distribute leaflets to make the community aware that Superfast Broadband is available, and what the benefits are for local people
- Offer information on where to find digital advice, and how to get superfast broadband

Why be a Digital Champion

The difference DC's can make:

- Help people improve modern life – medical & care services, personal banking, hobbies, contact with family etc.
- Help people avoid scams, viruses and to guard their identity online

The benefits of being a volunteer:

- Improve your own digital skills and understanding
- Get involved in, and give something back to your own community
- Be the first people to know latest updates on superfast broadband rollout
- Network with other Digital Champions across the county

Resources to support Digital Champions

The Toolkit:

- Induction session & other relevant training
- Electronic updates on Superfast Broadband rollout in Leicestershire
- Guidance on planning community activities and support
- Template documents for recording and measuring community activities and achievements
- External weblinks for advice on digital issues, online-training, case studies, and UK news updates
- Digital Champion networking to share ideas and approaches
- LCC Community Broadband Co-ordinator support

How to become a Digital Champion

- Hear a presentation; read the website; respond to a publicity campaign
- Read online FAQs or email questions to Community Broadband Co-ordinator (CBC)
- Fill in online application form
- Sign online volunteer agreement; read volunteering policy
- Attend Digital Champions induction
- Keep in touch through CBC



Community solutions

Helen Harris

Communities and Places Manager



**SUPERFAST
BRITAIN**



EUROPEAN UNION
Investing in Your Future
European Regional
Development Fund 2007-13

Community Solutions

1. SEP – Superfast Extension Programme will show areas county which will not receive Superfast deployment

2. Broadband Community Co-ordinator will then work with these communities to access funding for feasibility studies and to hand- hold through procurement of solutions

3. There is a £500,000 pot of funding to implement these solutions (£250k LCC; £250k Government).

4. Leicestershire County Council is proposing to allocate some of this funding for communities to utilise for feasibility studies on alternative solutions (range of options Build and Benefit, DIY)

5. Our Community Co-ordinator will be able to assist with investigating additional funding sources.



Feasibility Fund

- 1.To enable specialist support for the preparation of a community initiative**
- 2.Technical /legal advice on the most appropriate structure to establish/run a broadband initiative**
- 3.Maximum amount £5,000 but will consider more for larger areas/groups communities**
- 4.Fund up to 50% cost so match funding is required.**
- 5.Groups need to be formally constituted and not for profit**

Q&A

Tom Purnell

Assistant Chief Executive, LCC
SRO Superfast Leicestershire



**SUPERFAST
BRITAIN**



EUROPEAN UNION
Investing in Your Future
European Regional
Development Fund 2007-13